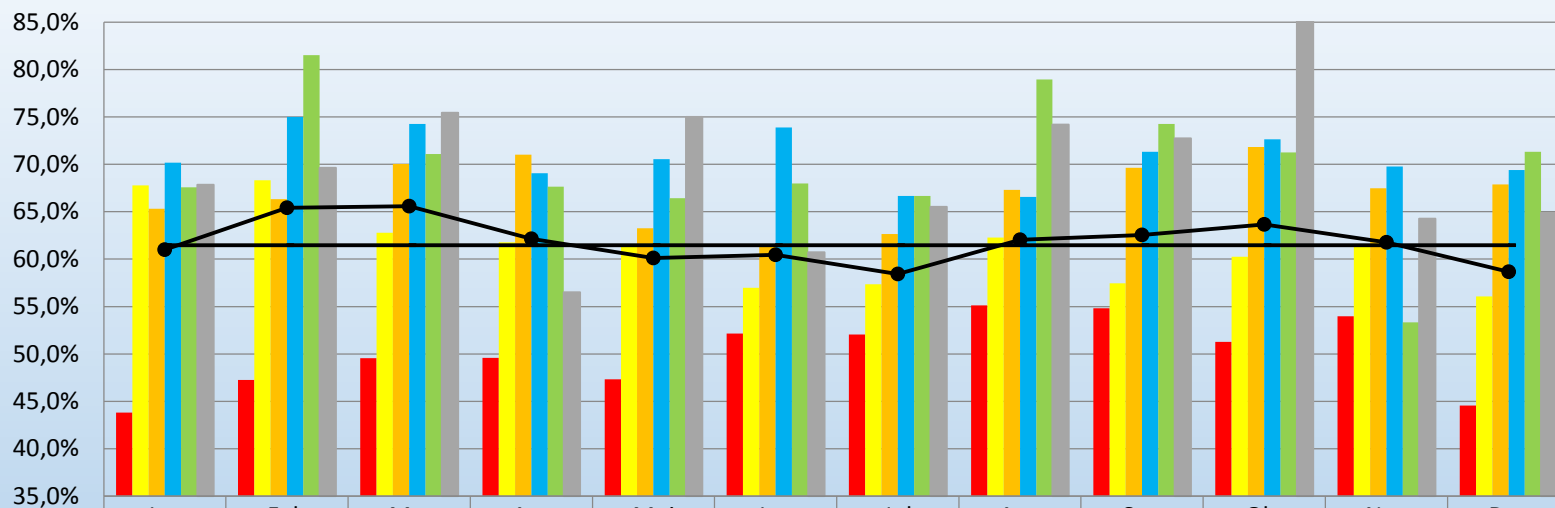


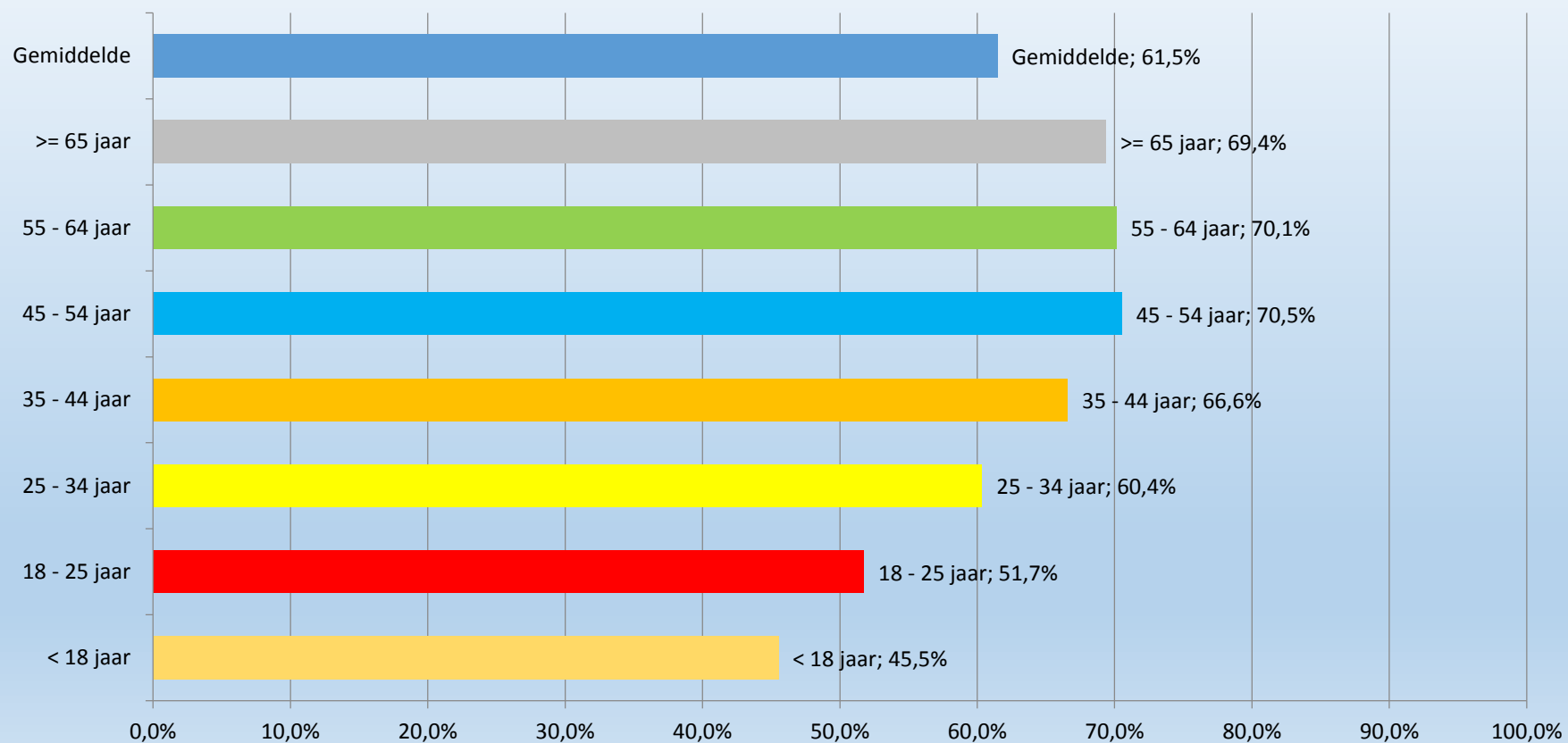
KVB1 slagingspercentages 2015 per leeftijdscategorie

inclusief KVB1 onderdeel van KVB1+KVB2 examens



	Jan	Feb	Mrt	Apr	Mei	Jun	Jul	Aug	Sep	Okt	Nov	Dec
■ < 25 jaar	44%	47%	50%	50%	47%	52%	52%	55%	55%	51%	54%	45%
■ 25 - 34 jaar	68%	68%	63%	62%	62%	57%	57%	62%	57%	60%	62%	56%
■ 35 - 44 jaar	65%	66%	70%	71%	63%	61%	63%	67%	70%	72%	67%	68%
■ 45 - 54 jaar	70%	75%	74%	69%	71%	74%	67%	67%	71%	73%	70%	69%
■ 55 - 64 jaar	68%	82%	71%	68%	66%	68%	67%	79%	74%	71%	53%	71%
■ >= 65 jaar	68%	70%	75%	57%	75%	61%	66%	74%	73%	88%	64%	65%
● Maand	61%	65%	66%	62%	60%	60%	58%	62%	63%	64%	62%	59%
— Jaar gemiddelde	61%	61%	61%	61%	61%	61%	61%	61%	61%	61%	61%	61%

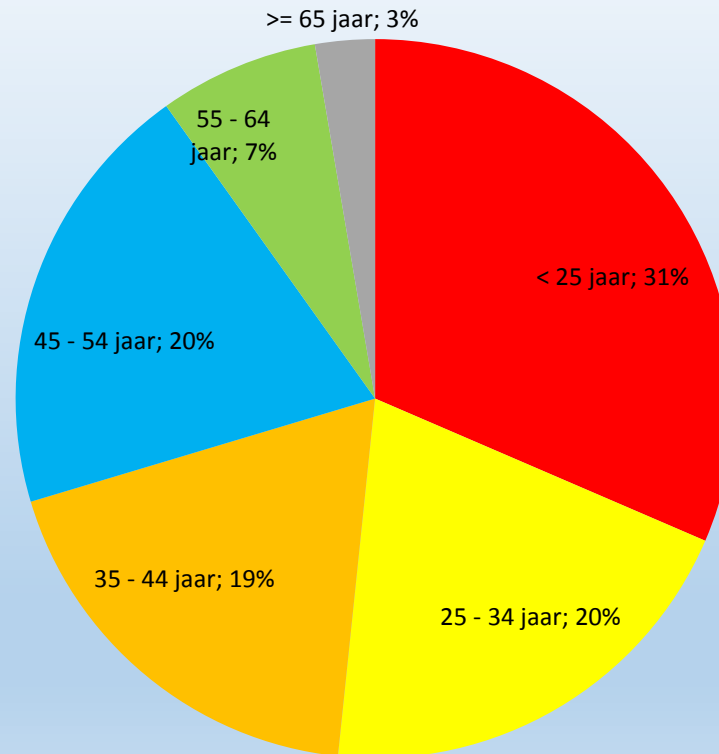
KVB1 slagingspercentages 2015 per leeftijdscategorie jaargemiddelde



Gemiddelde 2014: 58,8%

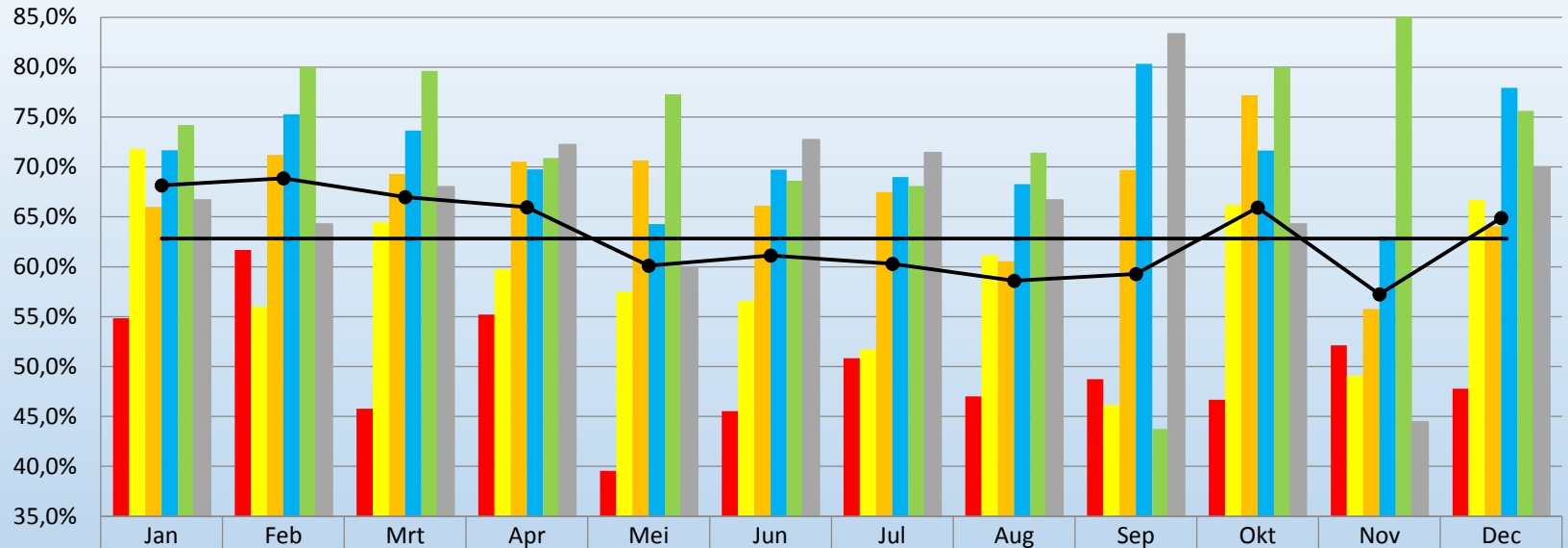
KVB1 afgenomen examens 2015 per leeftijdscategorie

inclusief KVB1 onderdeel van KVB1+KVB2 examens



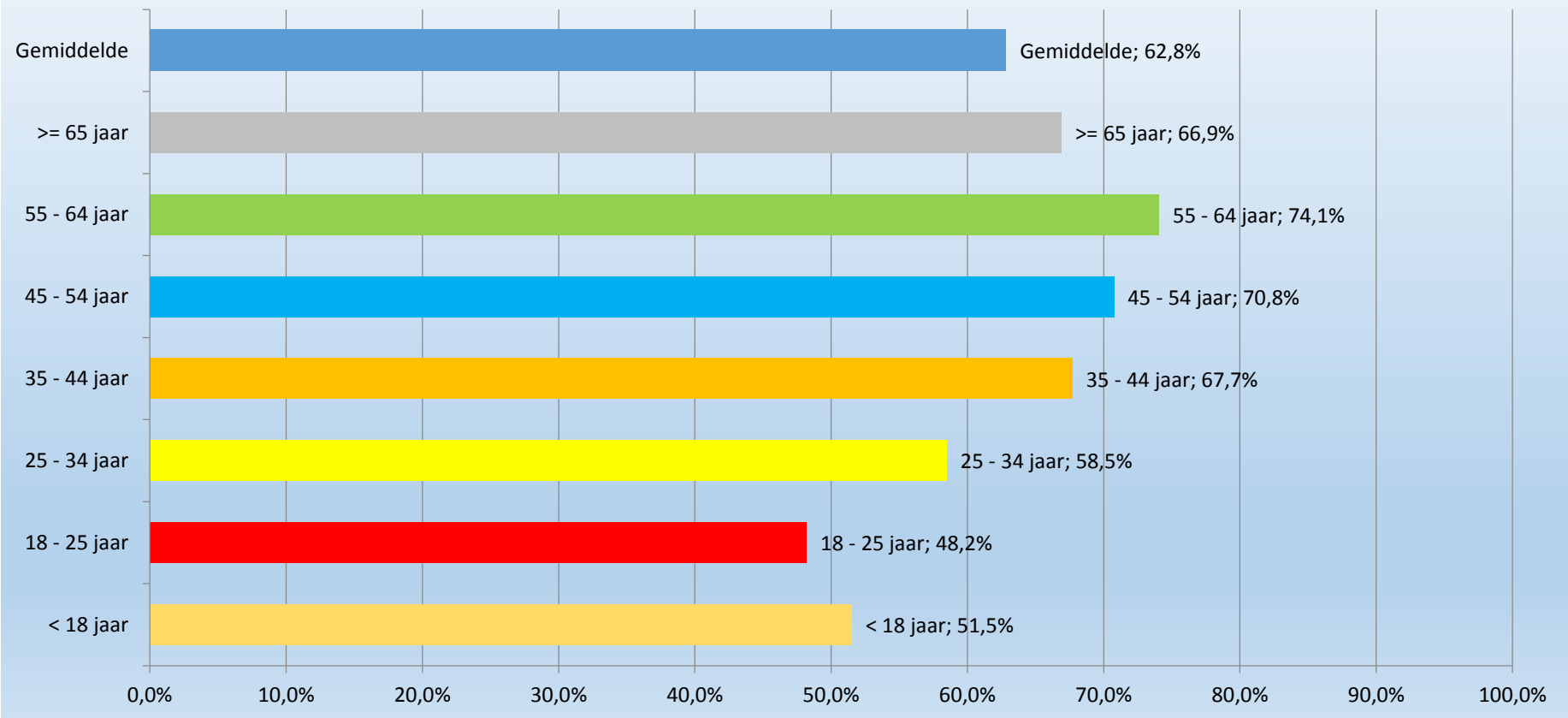
KVB2 slagingspercentages 2015 per leeftijdscategorie

inclusief KVB2 onderdeel van KVB1+KVB2 examen



	Jan	Feb	Mrt	Apr	Mei	Jun	Jul	Aug	Sep	Okt	Nov	Dec
■ < 25 jaar	55%	62%	46%	55%	40%	46%	51%	47%	49%	47%	52%	48%
■ 25 - 34 jaar	72%	56%	64%	60%	58%	57%	52%	61%	46%	66%	49%	67%
■ 35 - 44 jaar	66%	71%	69%	71%	71%	66%	67%	61%	70%	77%	56%	64%
■ 45 - 54 jaar	72%	75%	74%	70%	64%	70%	69%	68%	80%	72%	63%	78%
■ 55 - 64 jaar	74%	80%	80%	71%	77%	69%	68%	71%	44%	80%	90%	76%
■ >= 65 jaar	67%	64%	68%	72%	60%	73%	71%	67%	83%	64%	44%	70%
● Maand	68%	69%	67%	66%	60%	61%	60%	59%	59%	66%	57%	65%
— Jaar gemiddelde	63%	63%	63%	63%	63%	63%	63%	63%	63%	63%	63%	63%

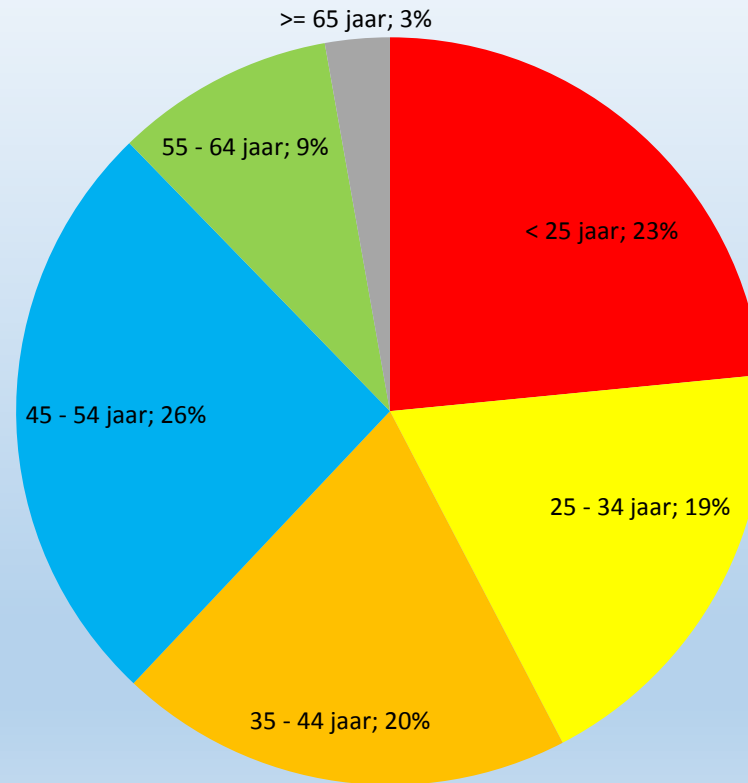
KVB2 slagingspercentages 2015 per leeftijdscategorie jaargemiddelde



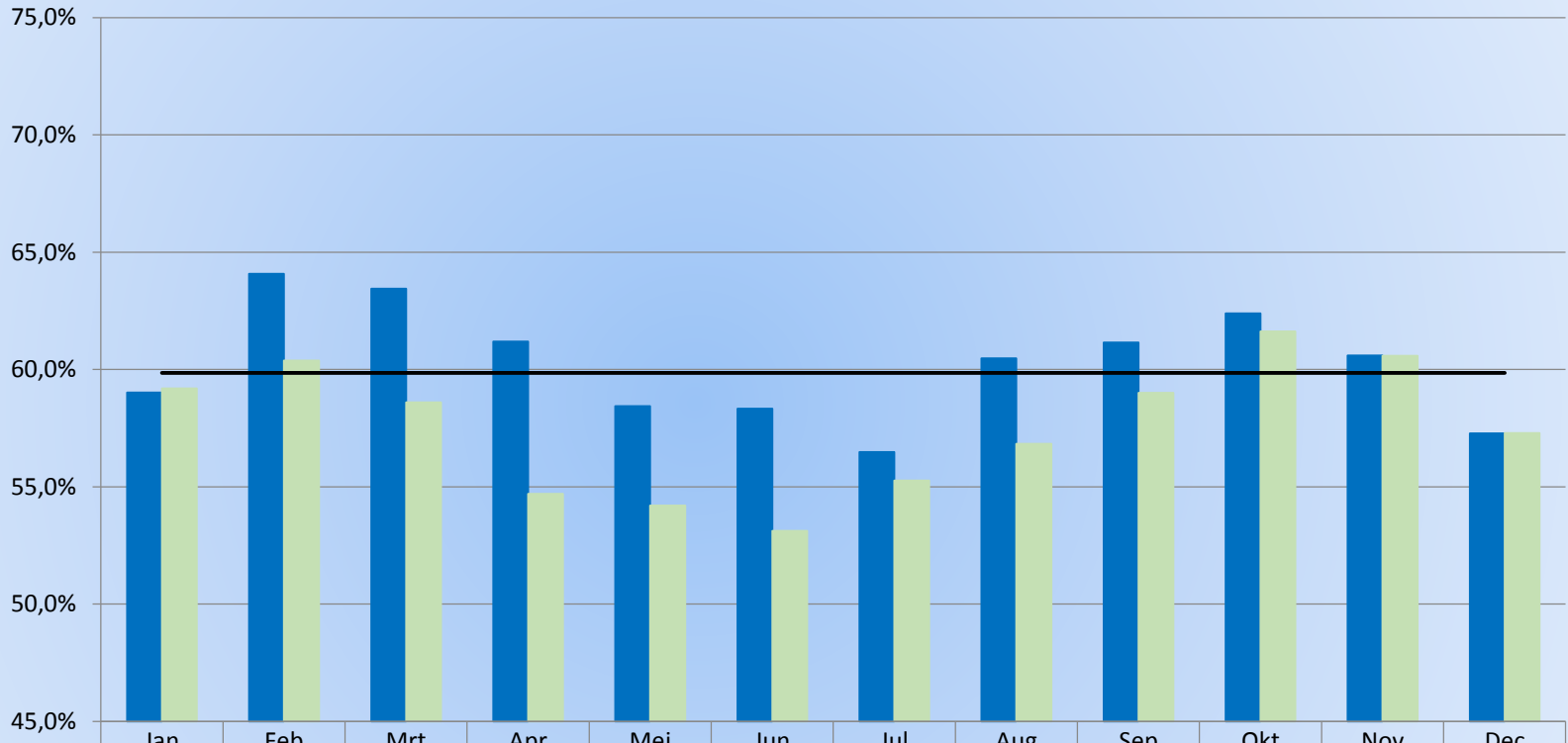
Gemiddelde 2014: 62,5%

KVB2 afgenomen examens 2015 per leeftijdscategorie

inclusief KVB2 onderdeel van KVB1+KVB2 examen

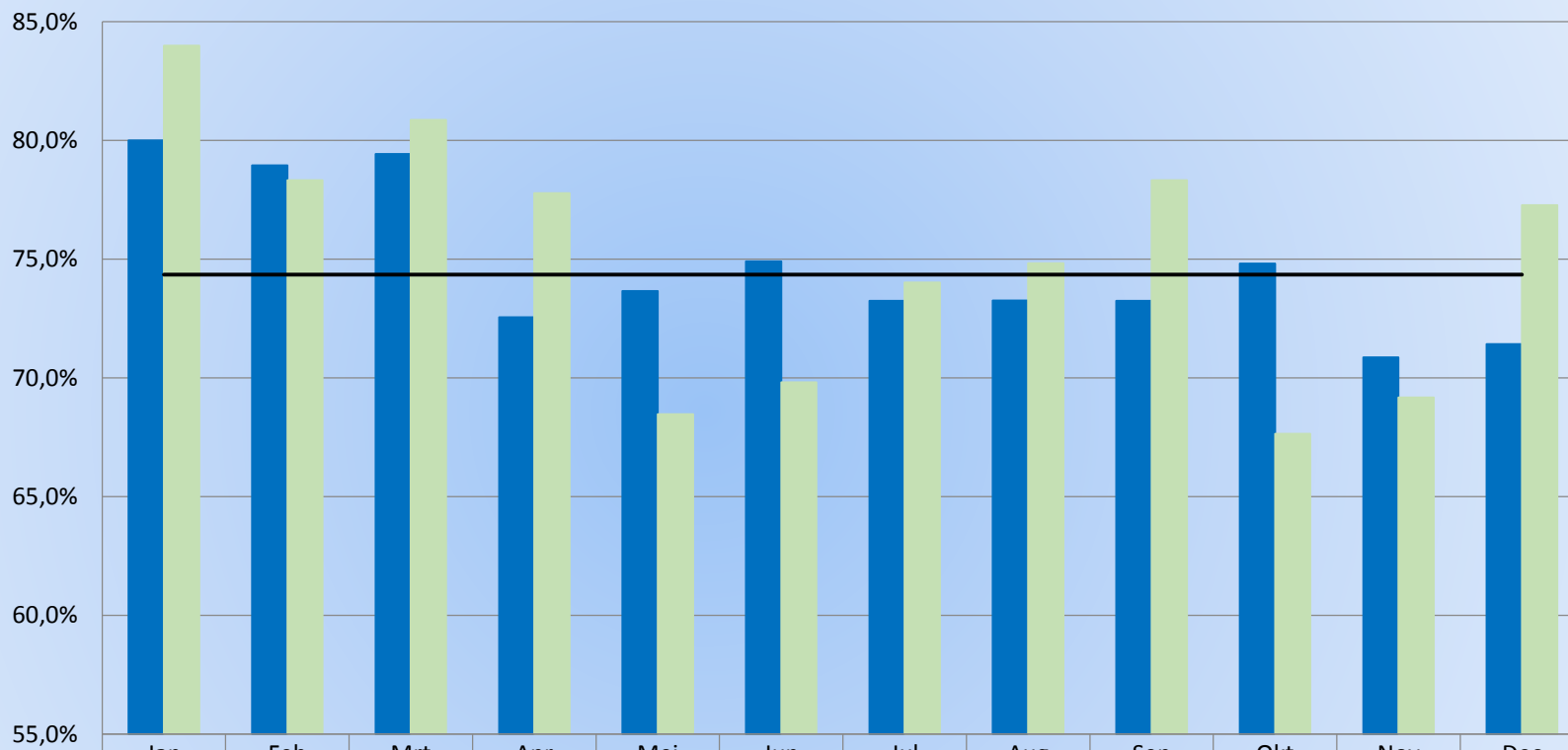


KVB1 slagingspercentages per maand



Gemiddelde 2014: 56,7%

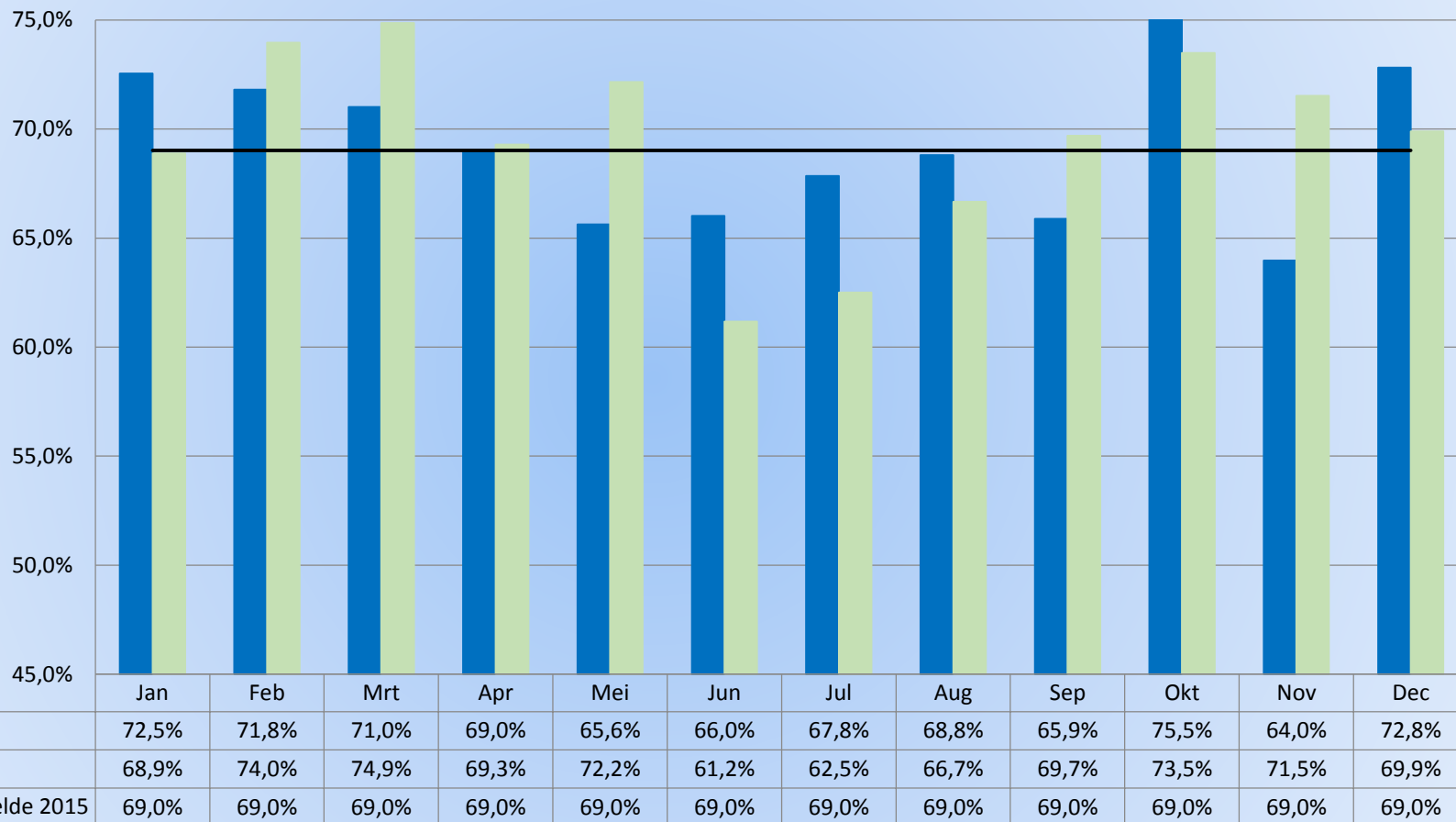
KVB1+KVB2 - KVB1 deel slagingspercentages per maand



2015	80,0%	78,9%	79,4%	72,5%	73,7%	74,9%	73,2%	73,3%	73,2%	74,8%	70,9%	71,4%
2014	84,0%	78,3%	80,9%	77,8%	68,5%	69,8%	74,0%	74,8%	78,3%	67,6%	69,2%	77,3%
Gemiddelde 2015	74,3%	74,3%	74,3%	74,3%	74,3%	74,3%	74,3%	74,3%	74,3%	74,3%	74,3%	74,3%

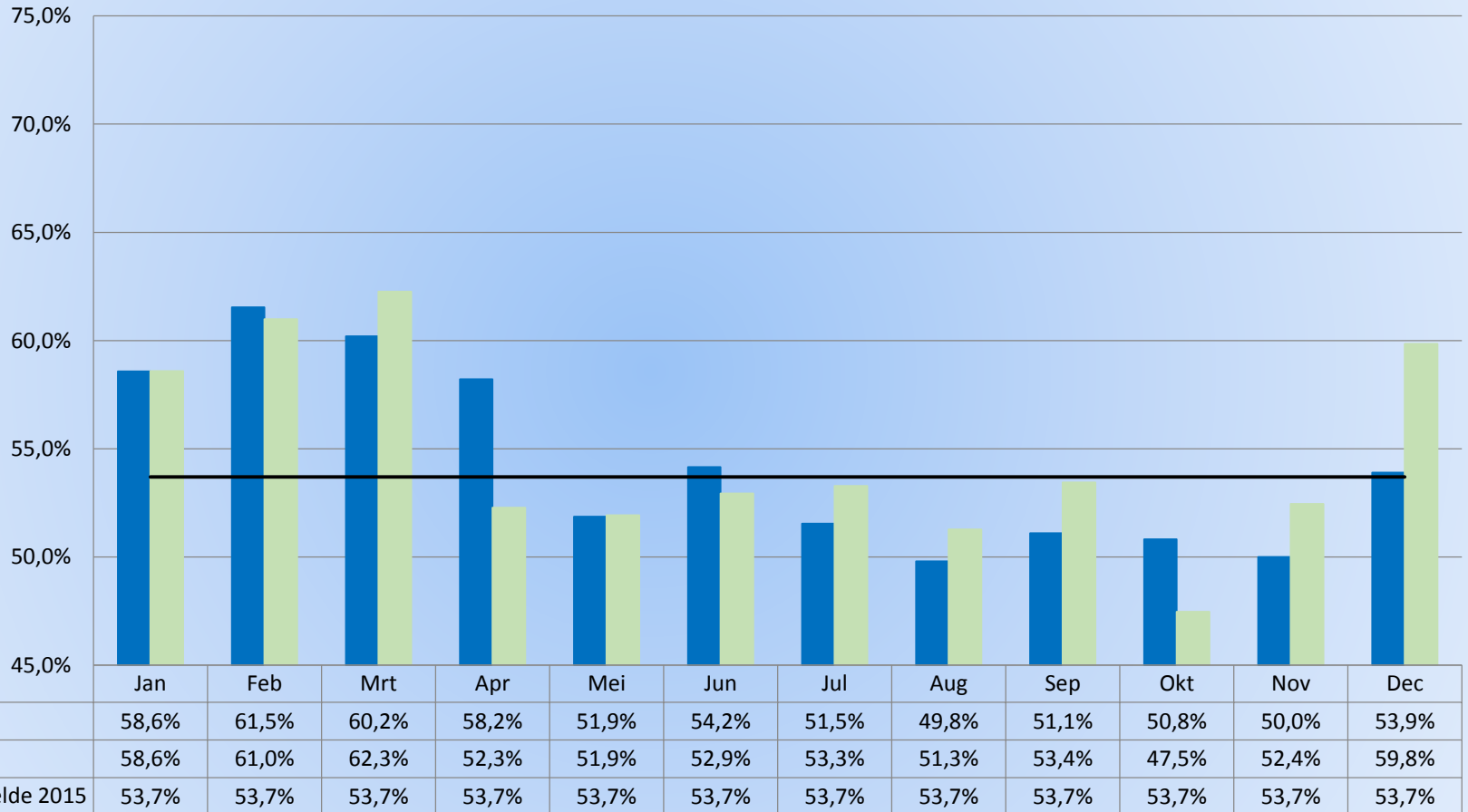
Gemiddelde 2014: 74,4%

KVB2 slagingspercentages per maand



Gemiddelde 2014: 69,2%

KVB1+KVB2 - KVB2 deel slagingspercentages per maand



Gemiddelde 2014: 54,2%